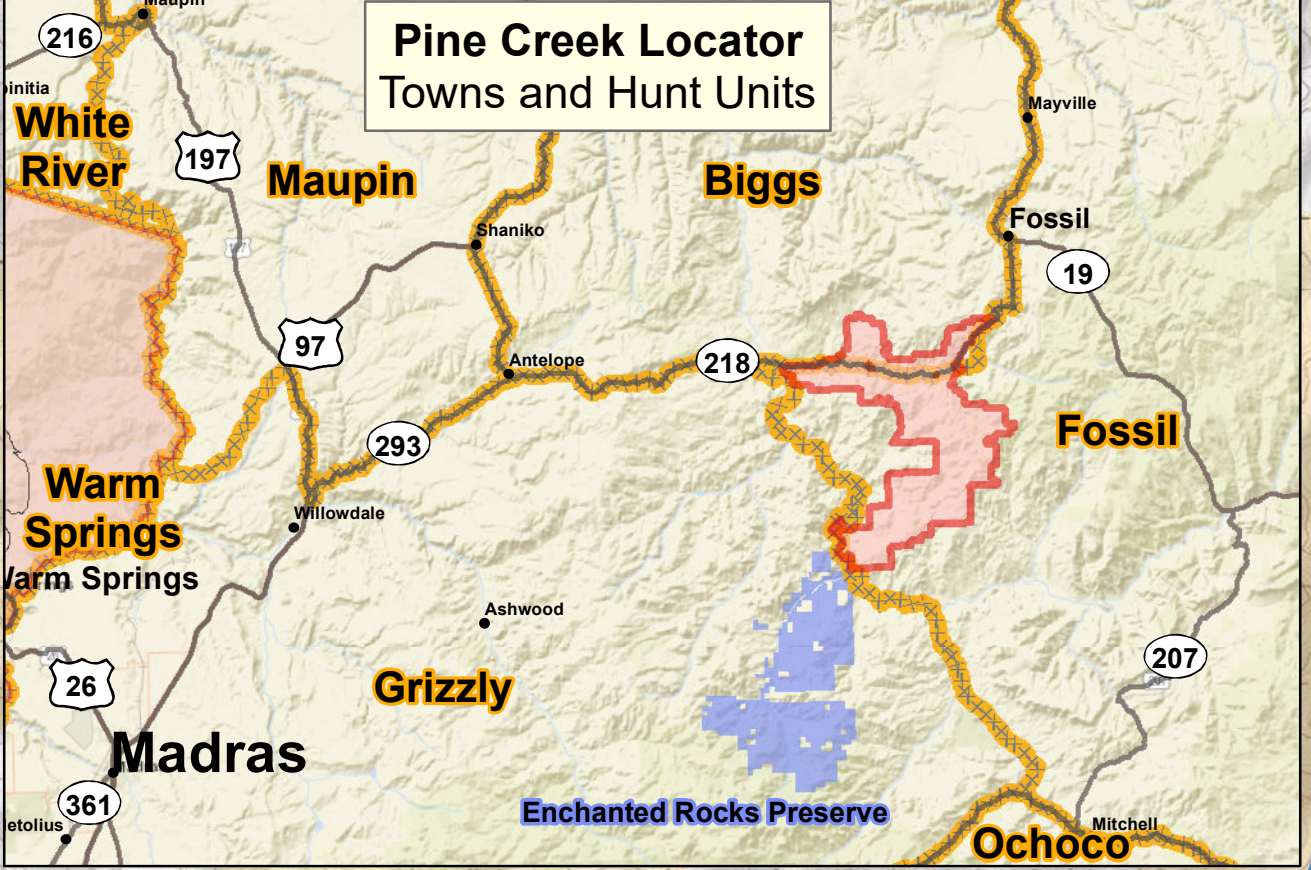
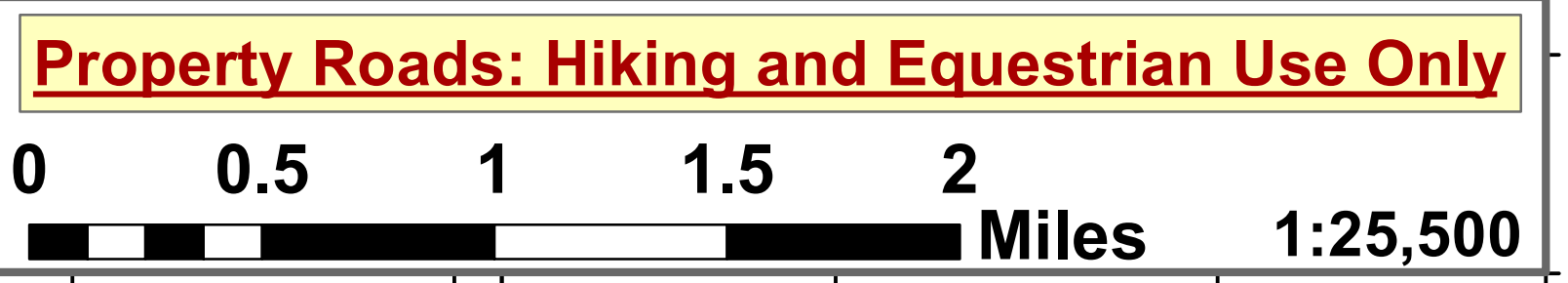


The Confederated Tribes of Warm Springs
 Pine Creek Conservation Area
 November 2022



- Information Kiosk/Parking
- Restrooms/JDFBMM
- BLM Trailhead Information
- Mileage posted between points
- Highway Mileposts
- No Hunting Areas
- River
- Wetland
- River Miles
- Pine Creek-7/9/2021
- HWY-218
- Access Road/Trail (Segment Length in Miles)
- County Road
- Designated Pine Creek Trail
- BLM Trail
- Rivers/Streams
- Juniper Fuel Reduction Areas
- BLM
- Hancock
- John Day Fossil Beds Nat. Monument
- State
- Private
- Enchanted Rocks Preserve
- Spring Basin Wilderness 2022

Date saved: 11/9/2022
 CTWS GIS Center ms and staff (Estimated Miles)
 Intended for general display purposes only.
 Overlapping transparent colors will blend.



Map labels include: Cove Cr. Rd. 3, West Sign Kiosk, Headquarters, Huntley Homestead, Huntley Rd. 1.8, Corrals, Pine Creek, Divide Route 5.8, Porcupine Butte Trail .4, Robinson Campground, Pine Creek Road, Pine Creek 218, East Sign Kiosk, Robinson Trail 1.4, Cut Across Rd. 1.2, Rhodes Canyon Rd. 1.5, Spring Basin Wilderness, Jeannies Peak Rd. 7.8, Rattlesnake Canyon Rd., Rattlesnake Cabin, Left Hand Rd. .5, Amine Canyon Rd. 3.1, Jeannies Peak Rd. 5.3, Enchanted Rocks Preserve, and To Fossil.

